

# Ridgeline Winter Showcase



*March 21st, 2026 11:00am - 7:00pm*

Ridgeline High School  
20150 E Country Vista Dr  
Liberty Lake, WA 99019

**Contact Information:**

James Haynes 509.230.7609  
Day of Show Unit Liaison

Hannah Sims 509.342.6300  
Judge Hospitality

**Parking:**

Unit Parking map is enclosed. Units should use the designated parking for buses/staff vehicles/equipment trucks. All spectators need to use the EVENT Parking Lot on the West Side of the building.

**Performer Passes:**

Student Performers will receive a wristband in the Director's Packet at check-in

**Staff/Volunteer Passes:**

All units will be supplied with 7 wristbands at check-in that will serve as staff passes. NO volunteers/staff will be allowed on the floor without a pass. At check-in, each group has the option of purchasing up to 10 additional passes at a discounted rate of \$10 each. Any person not wearing a wristband will be directed to the ticket table to purchase one. This rule will be strictly enforced.

**Admission:**

\$15 General Admission

**Performer Seating:**

If the main seating is filling up, we may ask that units/staff sit on the back bleachers to open up seating for the main audience.

**Concessions:**

The Ridgeline Band Boosters are providing concessions for the show. Concessions are located just outside the gymnasium and will be open for the duration of the show (while supplies last).

[Click HERE for Concessions Menu](#)

**Unit Critique:**

Critique will take place upstairs in the Library after the conclusion of colorguard and percussion preliminary rounds.

**Floor Folding:**

Floors can be stored in the field house after your performance. All floor folding should happen between rounds on designated breaks. Please be courteous to other groups and move quickly to ensure everyone has time to fold their floor.

**Prop/Floor Storage:**

Props and floors can be stored in the Commons behind the staircase. Please make sure you are not blocking any walkways for groups going to and from their warm-up areas.

**Photography:**

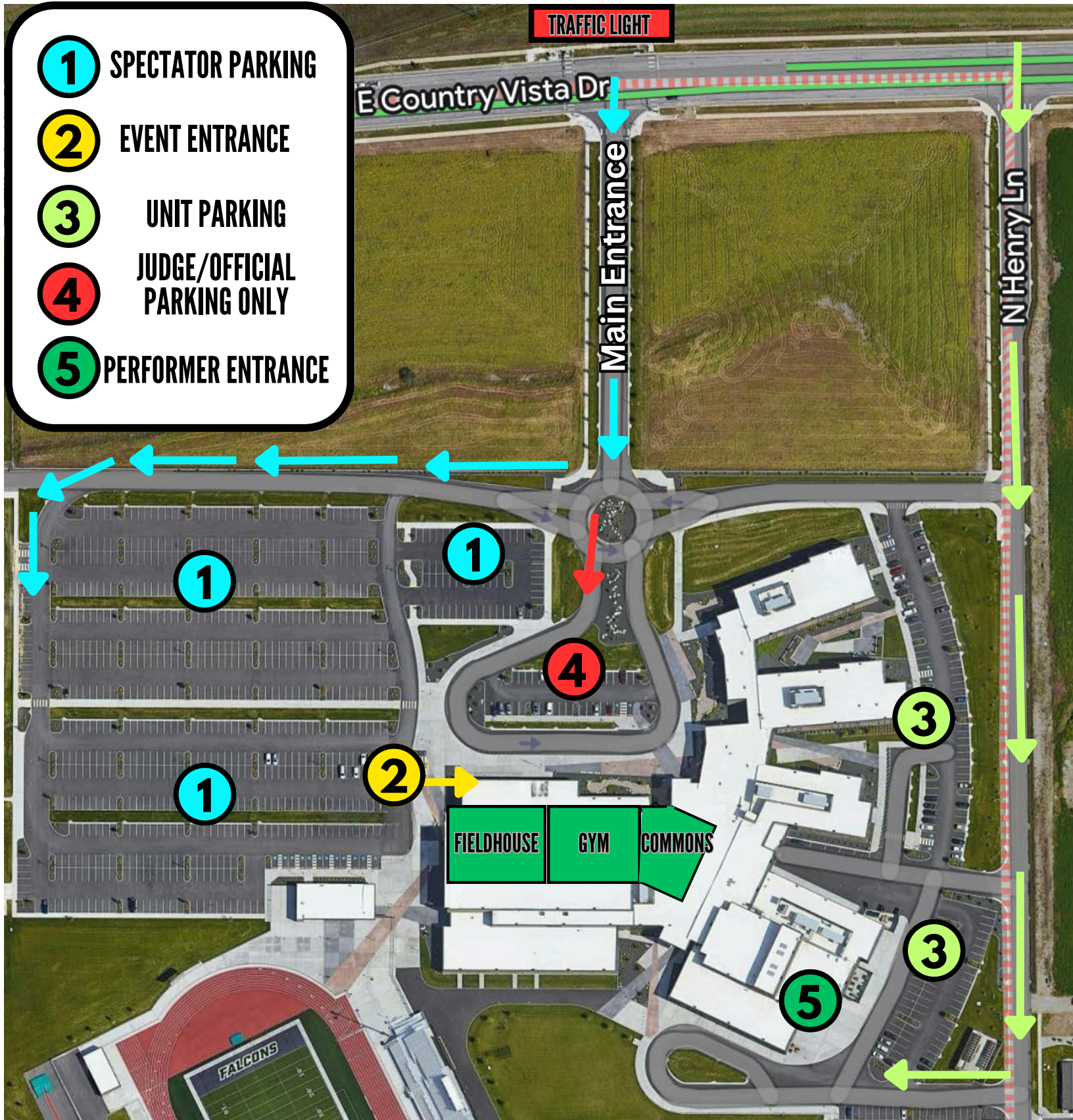
Photography will be provided by **Roy Powell Photography**. Action shots will be available for purchase at <https://roypowellphotography.zenfoliosite.com/galleries>

# RIDGELINE HIGH SCHOOL

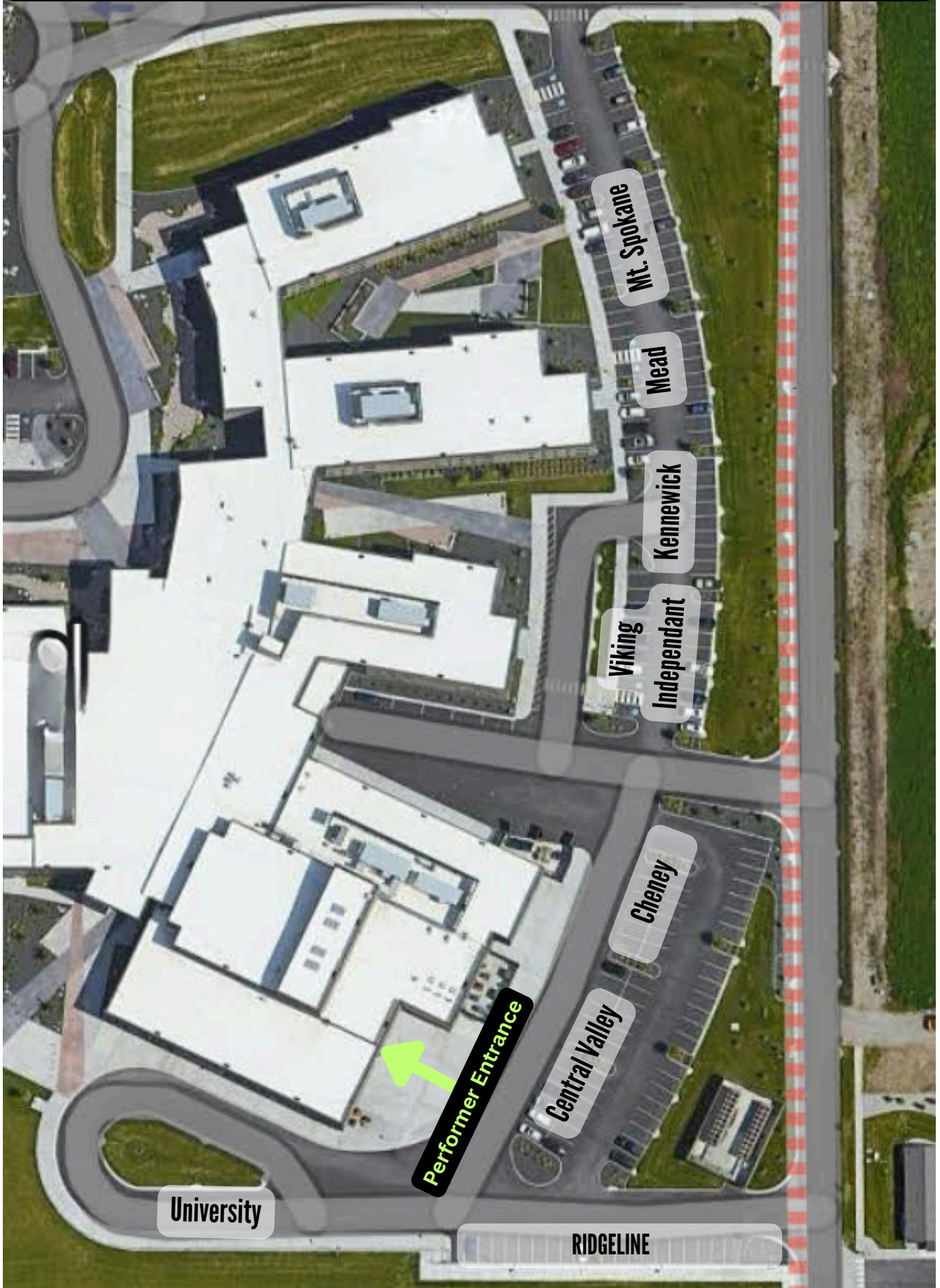
20150 E Country Vista Drive, Liberty Lake, WA 99019

- Spectators take the first exit in the roundabout towards “Event/Student Parking”
- Equipment Trucks & Busses turn in on N Henry Ln

- 1 SPECTATOR PARKING
- 2 EVENT ENTRANCE
- 3 UNIT PARKING
- 4 JUDGE/OFFICIAL PARKING ONLY
- 5 PERFORMER ENTRANCE



# PERFORMER PARKING LOT



**PERFORMER EXIT**

**SPECTATOR ENTRANCE**

OUTSIDE

**FIELDHOUSE**  
(FLOOR FOLDING)

**MAIN GYM**

**SPECTATORS & JUDGES**

GUARD WARM-UP B      GUARD WARM-UP A

**STAIRS**

**COMMONS**

PERFORMER RESTROOMS

PROP/FLOOR STORAGE

**CONCESSIONS**

**LIBRARY**  
UPSTAIRS

Critique

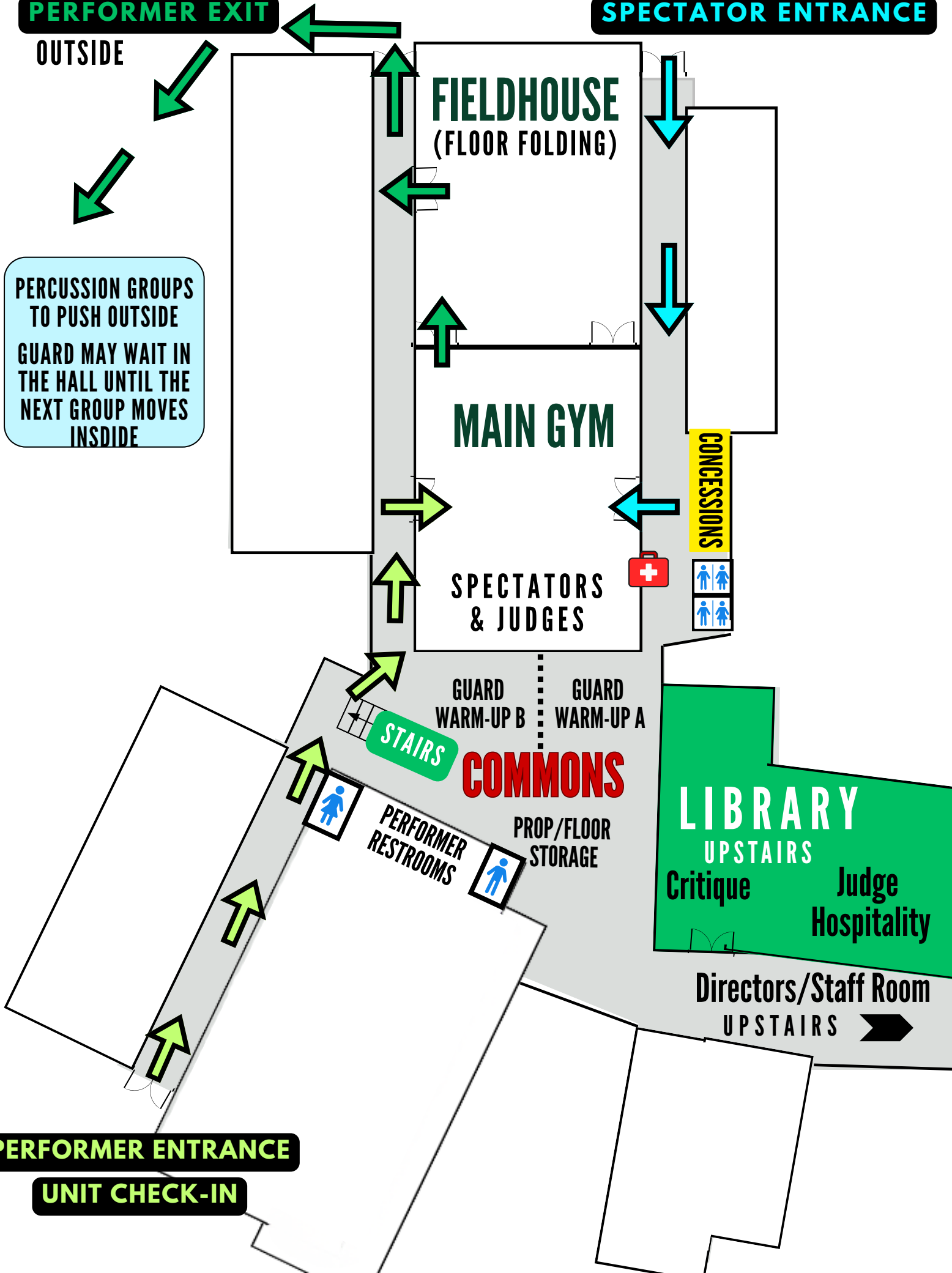
Judge Hospitality

Directors/Staff Room  
UPSTAIRS

PERCUSSION GROUPS TO PUSH OUTSIDE  
GUARD MAY WAIT IN THE HALL UNTIL THE NEXT GROUP MOVES INSIDE

**PERFORMER ENTRANCE**

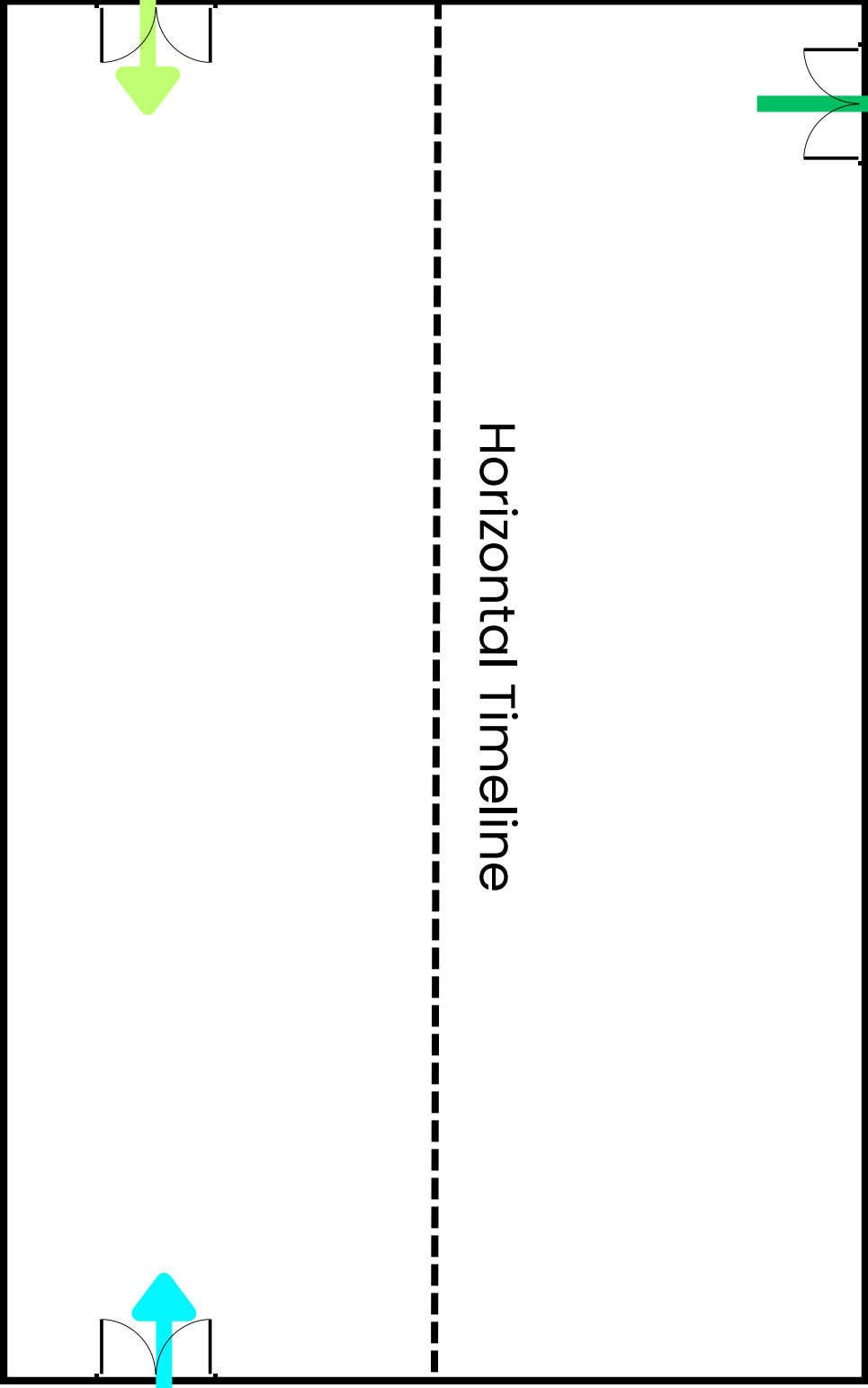
**UNIT CHECK-IN**



**PERFORMER ENTRANCE**

**PERFORMER EXIT**

TO FIELDHOUSE



**Spectators/Judges**

Horizontal Timeline

**Performer Seating**

**SPECTATOR ENTRANCE/EXIT**

# GUARD STORAGE AREAS

## TEAM STORAGE

- Space to gather as a team.
- Store personal backpacks, food tables, etc.

**B**

**C**

**D**

**MAIN GYM**

**COMMONS**

PROP STORAGE  
- Behind stairs in Commons.

**CHOIR ROOM**

**RIDGELINE**

**RIDGELINE JUNIORS**

**PERFORMER  
ENTRANCE**

**UNIVERSITY**

**MT SPOKANE**

**CHENEY**

**EVERGREEN**

**CENTRAL VALLEY**

**MEAD**

**KENNEWICK**