



**Table Rock Premier**  
**February 14, 2026**  
**Scenic Middle School**

---

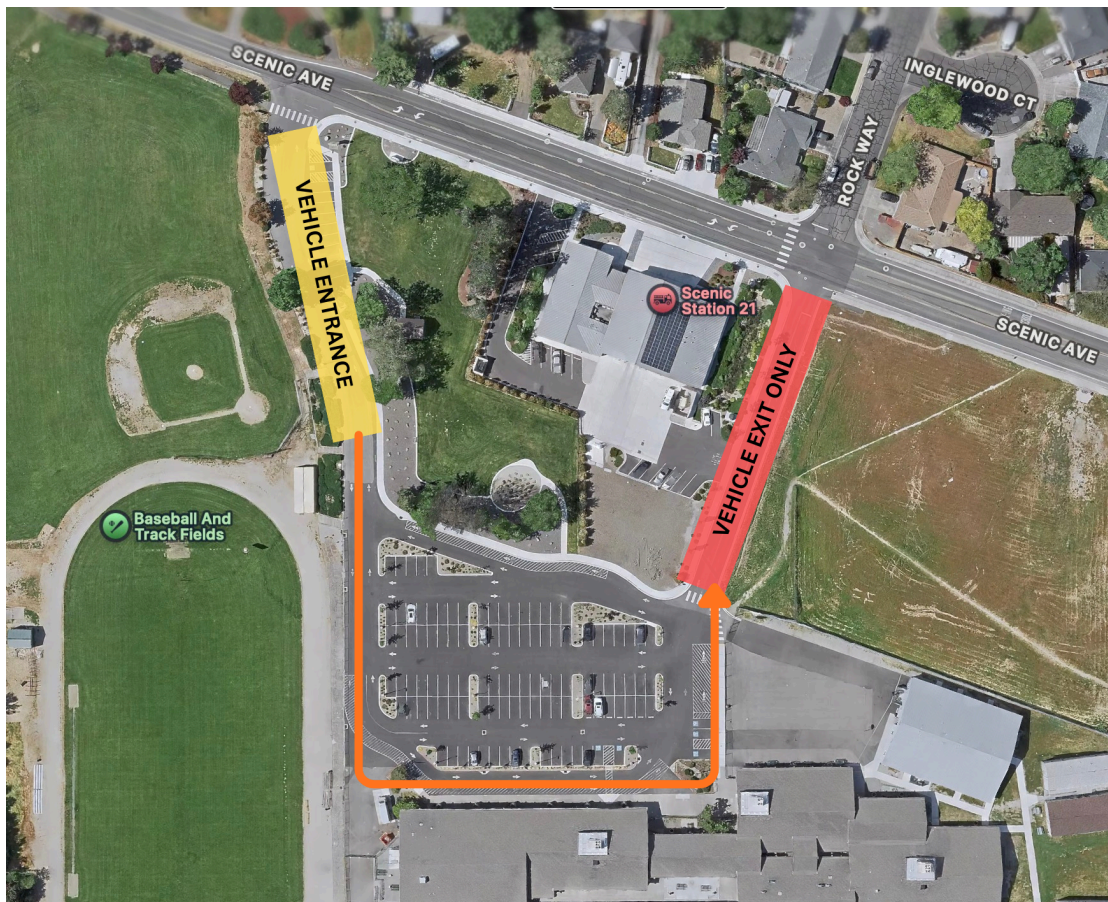
Directions to Scenic Middle School

**Traveling North on I5:**

- Take Exit 33 toward Central Point
- Turn Left onto E Pine Street
- Turn Right onto N Tenth Street (turns into scenic ave)
- Using the entrance only, turn left into Scenic Middle School

**Traveling South on I5:**

- Take Exit 35 onto OR-99 South
- Turn Left onto N Pacific Hwy
- Turn left onto Scenic Ave
- Using the entrance only, turn right into Scenic Middle School



**ENTRANCE ONLY**

**EXIT ONLY**

**SPECTATOR PARKING**

**RESERVED PARKING**

**FOOD TRUCKS/BUS LANE**

**ENTRANCE**

**FLOOR FOLDING**

**CONCESSIONS**

**TICKETS/FIRST AID**

**JUDGE HOSPITALITY**

**DIRECTOR HOSPITALITY**

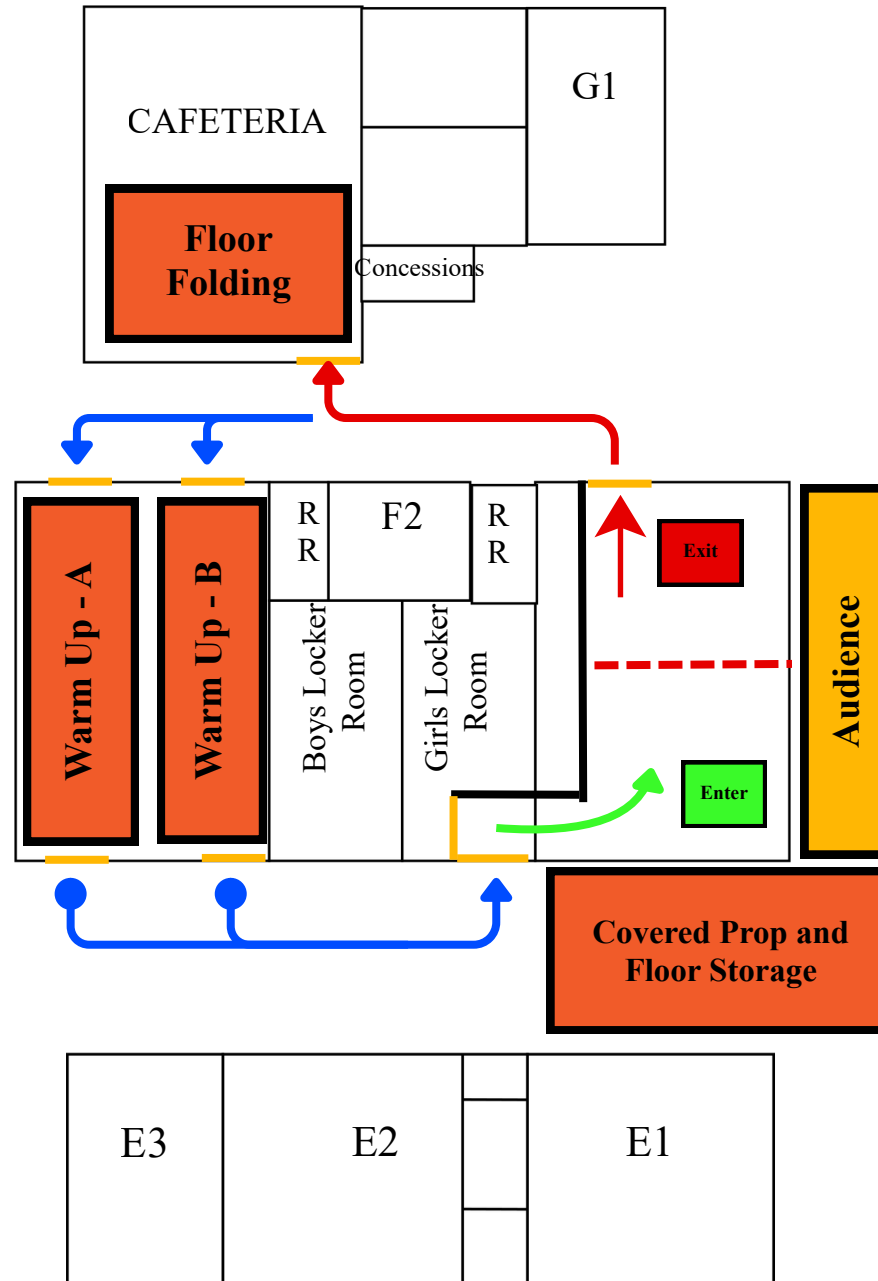
**WARM UP GYM**

**PERFORMANCE GYM**

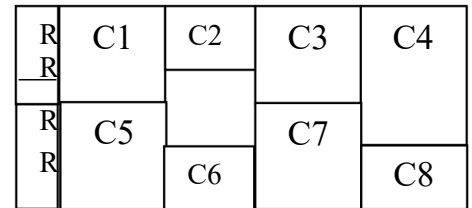
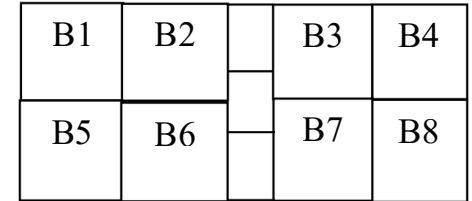
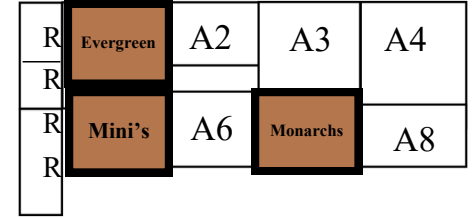
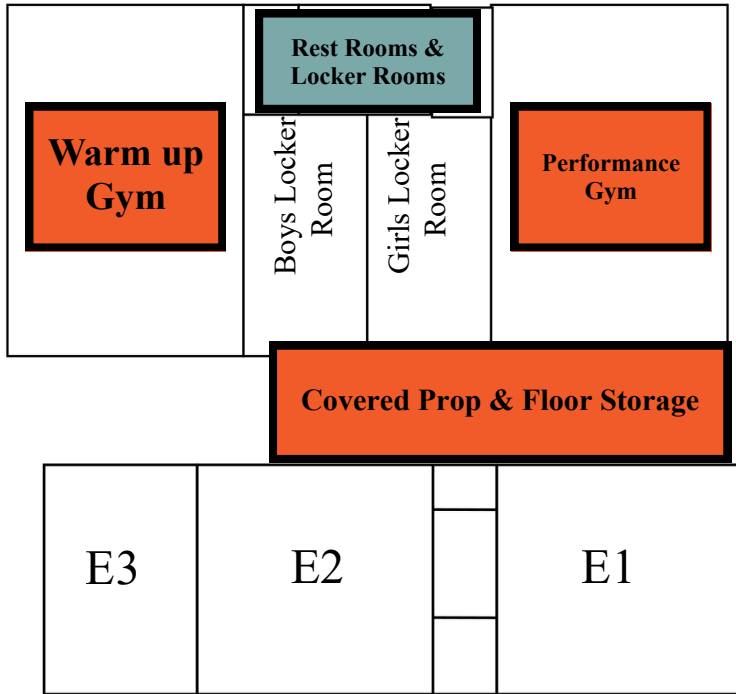
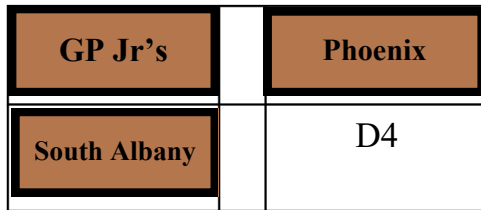
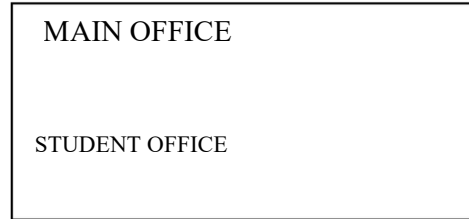
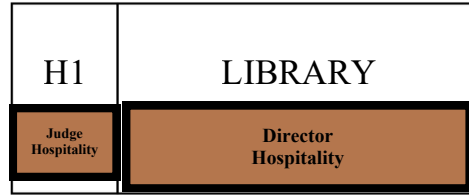
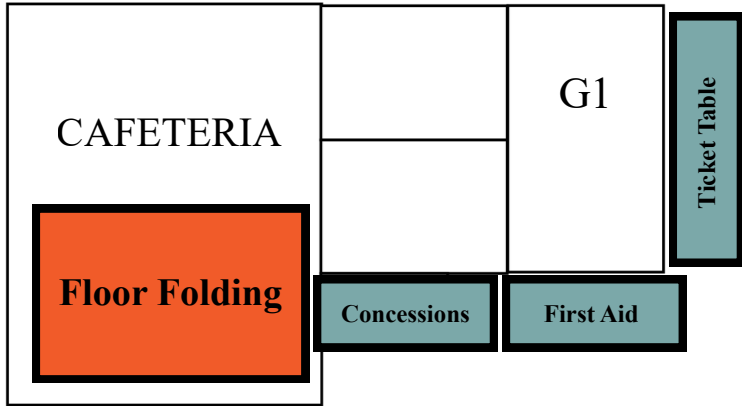
**GUARD HOME BASES/CLASSROOMS**

**PROP/FLOOR STORAGE (COVERED)**

# FLOW MAP



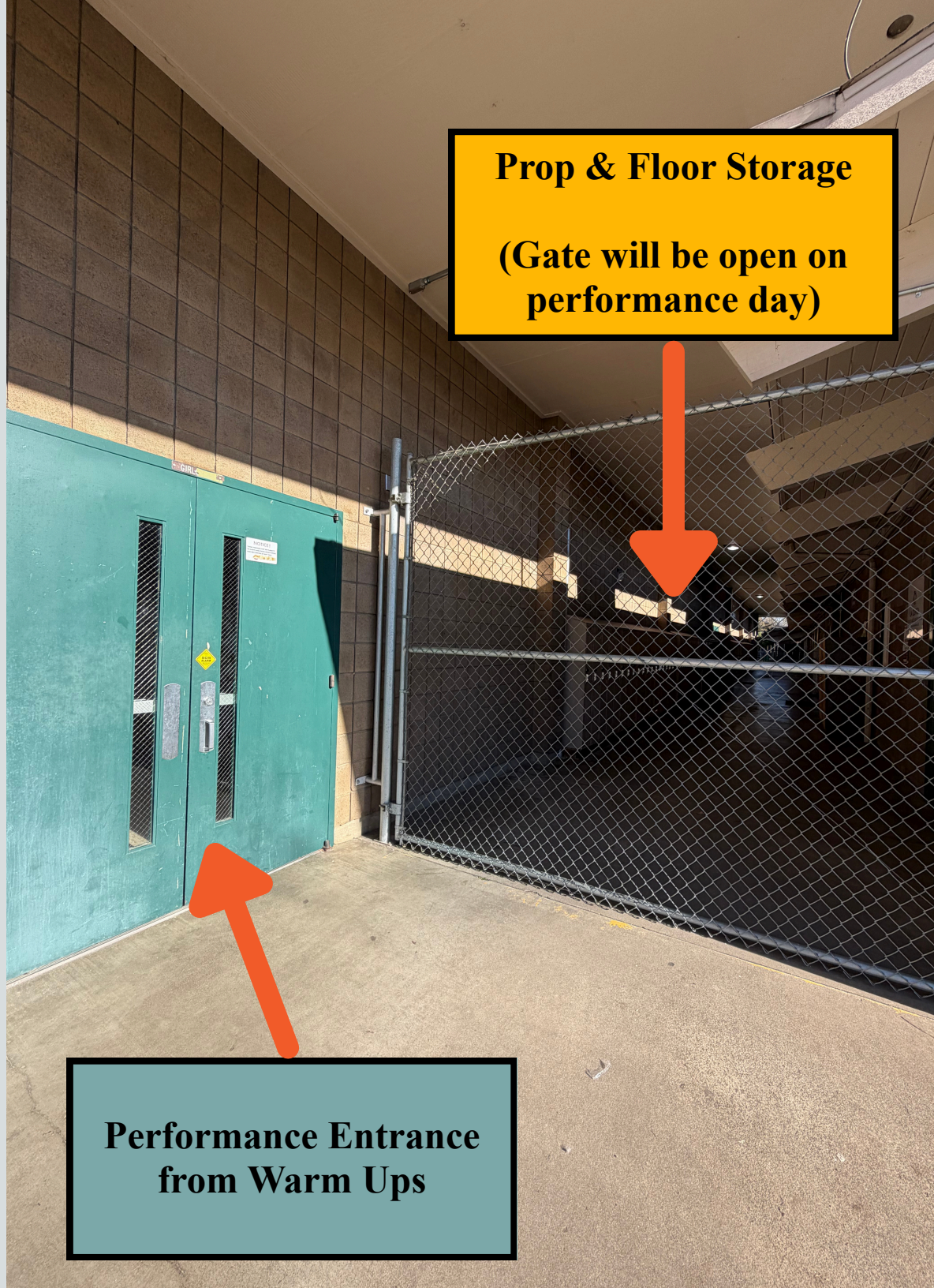
# SCENIC MIDDLE SCHOOL



**Prop & Floor Storage**

**(Gate will be open on  
performance day)**

**Performance Entrance  
from Warm Ups**





**Double Doors To Staging**  
Middle bar removed on  
performance day



**Staging Area**

**Enter**



**Exit**



**Audience**

**Spectator  
Entrance**