



**Table Rock Premier**  
**February 14, 2026**  
**Scenic Middle School**

**Welcome to the 2026 Table Rock Premier!**

|                             |   |
|-----------------------------|---|
| <b>Day of Show Contacts</b> | <b>Sam Cecilio-Barei</b> , Event Lead: (541) 660-0405<br><b>Sara Speziale</b> , Co-Lead: (541) 227-9332   |
| <b>Performer Passes</b>     | All student performers will receive a wristband at the time of unit Check-In  |
| <b>Staff Passes</b>         | All units will be supplied with 7 wristbands at Check-In that will serve as staff passes. If you have volunteers helping your team, they will not be allowed on the floor without a wristband. At Check-In, each unit has the option of purchasing up to 10 additional wristbands at the discounted rate of \$10 each. Please send a representative to the main ticket table. |
| <b>Event Staff</b>          | This event is hosted and staffed by Crater Band & Guard Boosters. If you have any questions or require assistance throughout the day, please look for a volunteer wearing an Orange Volunteer Lanyard. You may also call/text Sam or Sara.  |
| <b>Admission</b>            | \$15 Adults. \$10 for students/military/seniors. Children 2 and under are free.   |
| <b>Unit Check In</b>        | Unit Check In will be at the ticket table next to the main entrance/green gate.   |
| <b>First Aid</b>            | First Aid Station will be next to concessions. Any bandages, ace wrap, other minor injury supplies will be available.   |
| <b>Director Hospitality</b> | We will have a director lounge in the library for all directors and staff. Drinks and snacks will be available throughout the day. Please feel free to help yourself and hangout!   |
| <b>Guard Homebases</b>      | All teams will be assigned a classroom for the day. Please use this space with care and return it as it is found. Tables and chairs will be moved to the edges of classrooms to allow enough space for teams. Please ensure there is no spinning of equipment in classrooms.  |



**Table Rock Premier**  
**February 14, 2026**  
**Scenic Middle School**

|                                  |   |
|----------------------------------|---|
| <b>Performance Pathways</b>      | All pathways to warm up, performance area, and floor folding move through an outside campus. It is highly recommended shoes are worn when moving throughout these areas.  |
| <b>Concessions</b>               | Concessions will be located next to the cafeteria/floor folding. Snacks, drinks, popcorn, cotton candy, pizza, etc. will be available for purchase by the Crater Band & Guard Boosters.   |
| <b>Merch</b>                     | Limited supply of event merch will be available onsite. Event stickers will be sold as well. These items can be found at the concession stand.  |
| <b>Changing Area</b>             | The locker rooms will serve as the changing areas for the performers. Please help us keep these areas clean. Locker Rooms are located in between the performance gym and warm up gym. Locker Room doors will be available for performers only.  |
| <b>Videotaping</b>               | Video recording services will be offered at this event. Links to video performances will be shared within a week after the event. Units may also videotape their own performances for educational use. Anyone video recording a particular unit must receive permission from the Unit's Director. |
| <b>Floor Folding Area Access</b> | The floor folding area is in the cafeteria. After exiting the performance area, turn left (back towards the warm up gym) and the cafeteria will be on the right.  |
| <b>Program</b>                   | The event program will be sold for \$4 each. These can be bought at the ticket table.   |
| <b>Payment Methods</b>           | Cash and all major credit cards will be accepted  |
| <b>Awards</b>                    | There will be no award ceremony at this clinic style performance. The event will conclude at the end of the last program to perform.  |
| <b>Warm Ups</b>                  | There will be one gym used for equipment warm up. The gym will be split into two sections for a Warm Up Zone A and a Warm Up Zone B. Please refer to the event schedule for your warm up time. We will have a volunteer monitoring this area.   |



**Table Rock Premier**  
**February 14, 2026**  
**Scenic Middle School**

|                          |  |
|--------------------------|--|
| <b>Staging</b>           | <p>From the audience view, the performer entrance will be at the very back left of the gym. After leaving equipment warm up, teams will enter a hallway for staging. There will be a second set of doors in the hallway that will open once the previous team is finished performing.</p> <p>All tarps and props may be stored outside the staging doors. This area is covered.</p>  |
| <b>Spectator Parking</b> | <p>Limited spectator parking is available onsite. An overflow parking plan is in place and overflow vehicles will be directed to Crater High School. A free shuttle will be available for transportation between Scenic Middle School and Crater High School.</p>  |
| <b>Bus</b>               | <p>No buses may remain on Scenic Middle School campus. Buses may enter scenic middle school drop off zones to unload students and equipment. Buses will then be directed to Crater High School for parking. Please see the bus direction page for further instructions.</p>  |
| <b>Food</b>              | <p>Food Trucks will be onsite. Pizza, Cotton Candy, Popcorn, Chips, and Drinks will also be available from the Band &amp; Guard Boosters at concessions.</p> <ul style="list-style-type: none"> <li>-<b>Kona Ice</b>: Shaved Ice</li> <li>-<b>Rise &amp; Shine</b>: Smashburgers, Hotdogs, Corndogs, Chicken Strips, Chicken Sandwich, Fries</li> <li>-<b>Toasted Cheese</b>: Grilled Cheese. Vegan and Gluten Free Options Available</li> <li>-<b>Cake Pop Stand</b></li> <li>-<b>Vintage Vibes</b>: Italian Soda Stand</li> <li>-<b>Big Mikes</b>: Hot Dogs</li> </ul> |



**Table Rock Premier**  
**February 14, 2026**  
**Scenic Middle School**

---

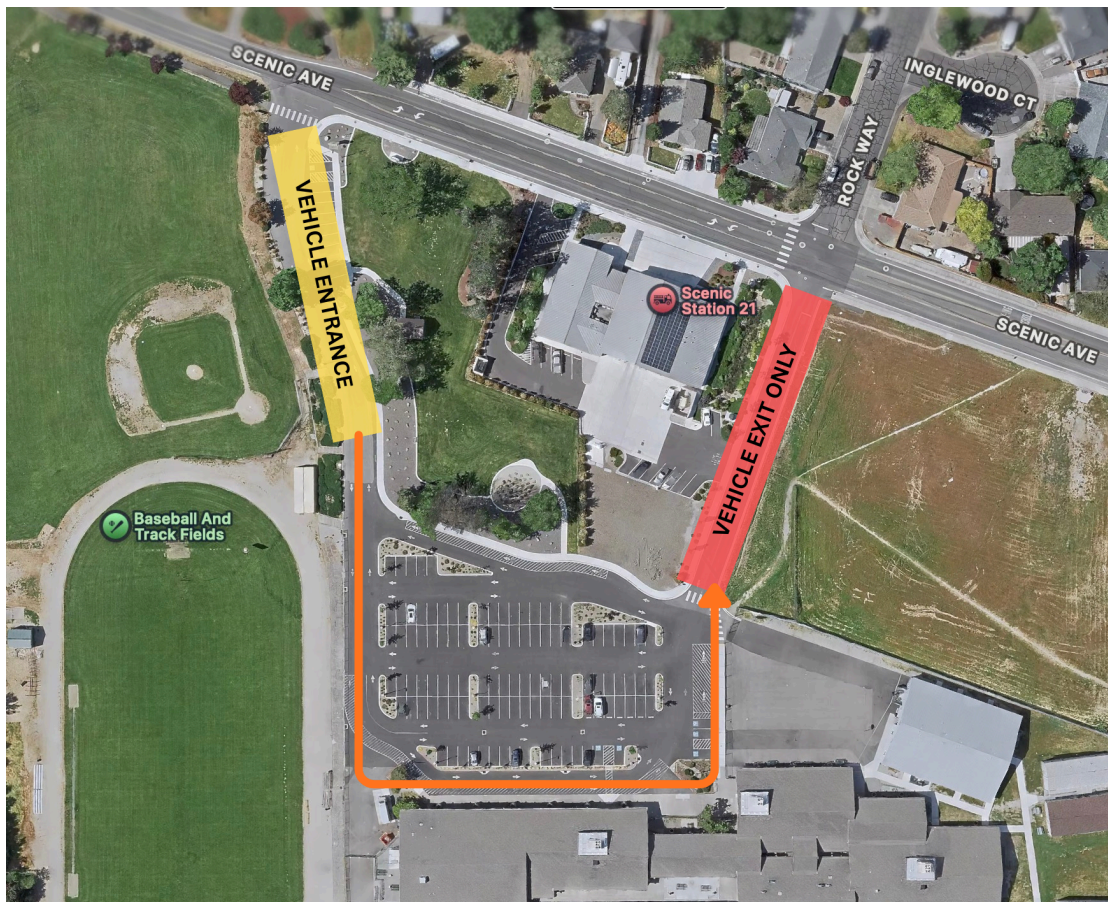
Directions to Scenic Middle School

**Traveling North on I5:**

- Take Exit 33 toward Central Point
- Turn Left onto E Pine Street
- Turn Right onto N Tenth Street (turns into scenic ave)
- Using the entrance only, turn left into Scenic Middle School

**Traveling South on I5:**

- Take Exit 35 onto OR-99 South
- Turn Left onto N Pacific Hwy
- Turn left onto Scenic Ave
- Using the entrance only, turn right into Scenic Middle School





**CRATER**  
**BAND & GUARD**



# CONCESSIONS

|                      |        |
|----------------------|--------|
| Drinks               | \$ 2   |
| Chips                | \$ 2   |
| Cotton Candy         | \$ 3   |
| Popcorn              | \$ 3   |
| Candy/Chocolate Bars | \$ 2   |
| Pizza                | \$ 3   |
| Shoutouts/Valentines | \$ 3   |
| Stickers             | \$ 2   |
| Shirts               | \$ 2 5 |
| Hoodies              | \$ 4 0 |



**ENTRANCE ONLY**

**EXIT ONLY**

**SPECTATOR PARKING**

**RESERVED PARKING**

**FOOD TRUCKS/BUS LANE**

**ENTRANCE**

**FLOOR FOLDING**

**CONCESSIONS**

**TICKETS/FIRST AID**

**JUDGE HOSPITALITY**

**DIRECTOR HOSPITALITY**

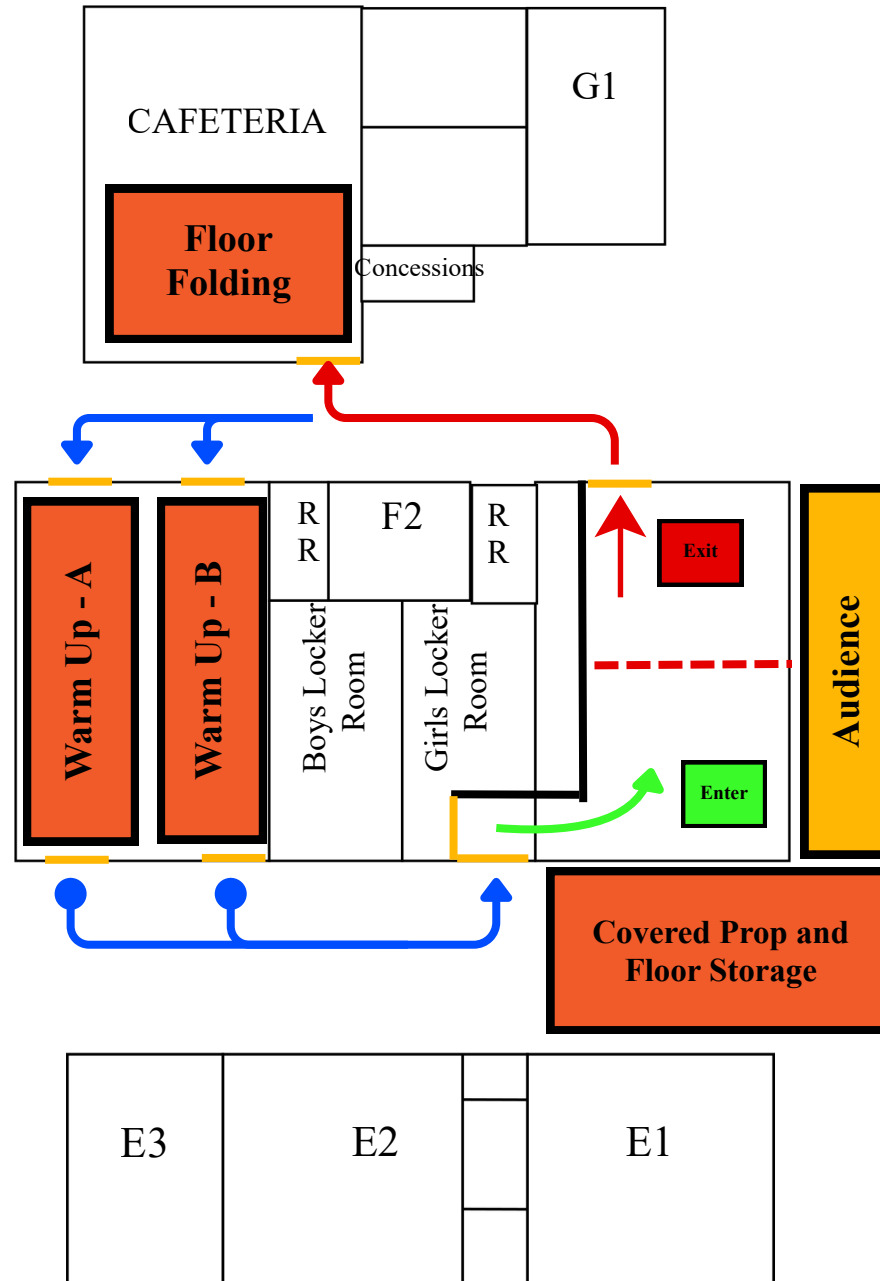
**WARM UP GYM**

**PERFORMANCE GYM**

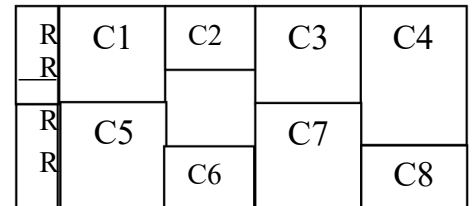
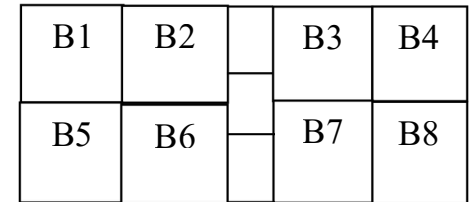
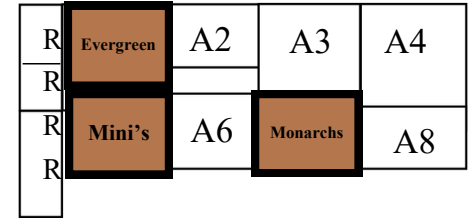
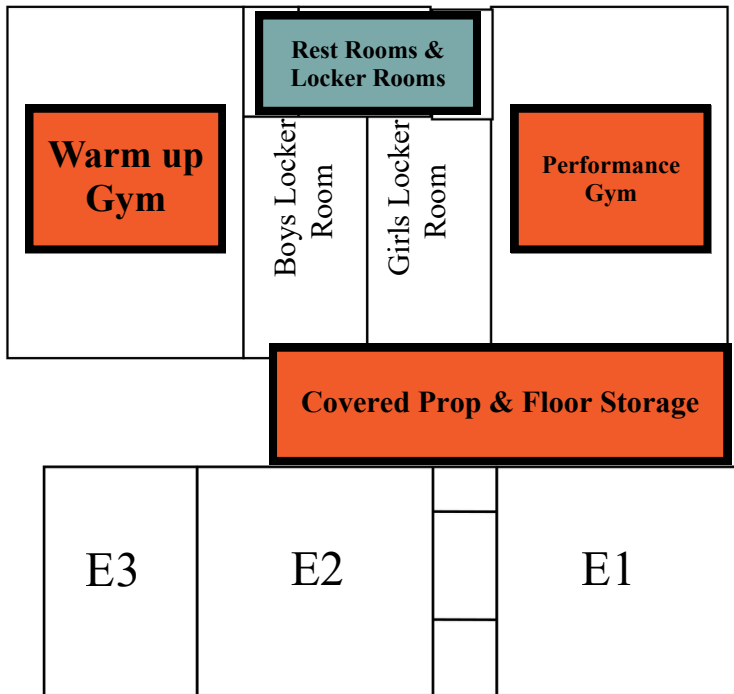
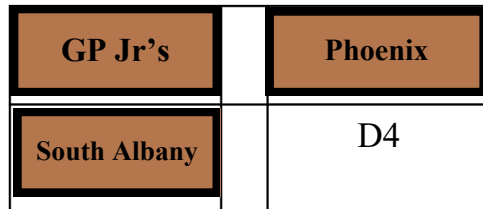
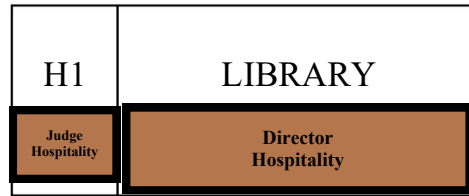
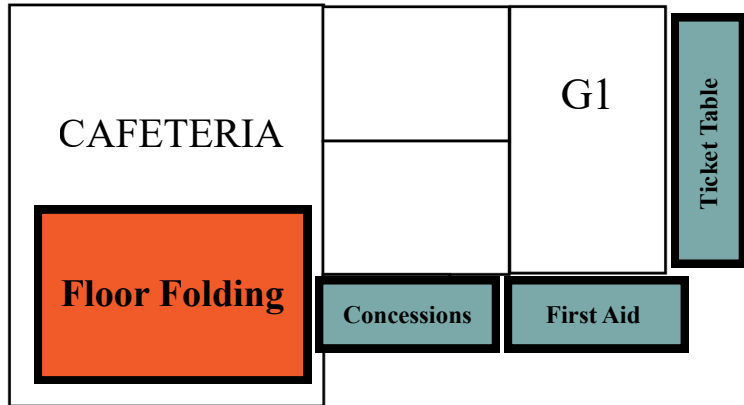
**GUARD HOME BASES/CLASSROOMS**

**PROP/FLOOR STORAGE (COVERED)**

# FLOW MAP



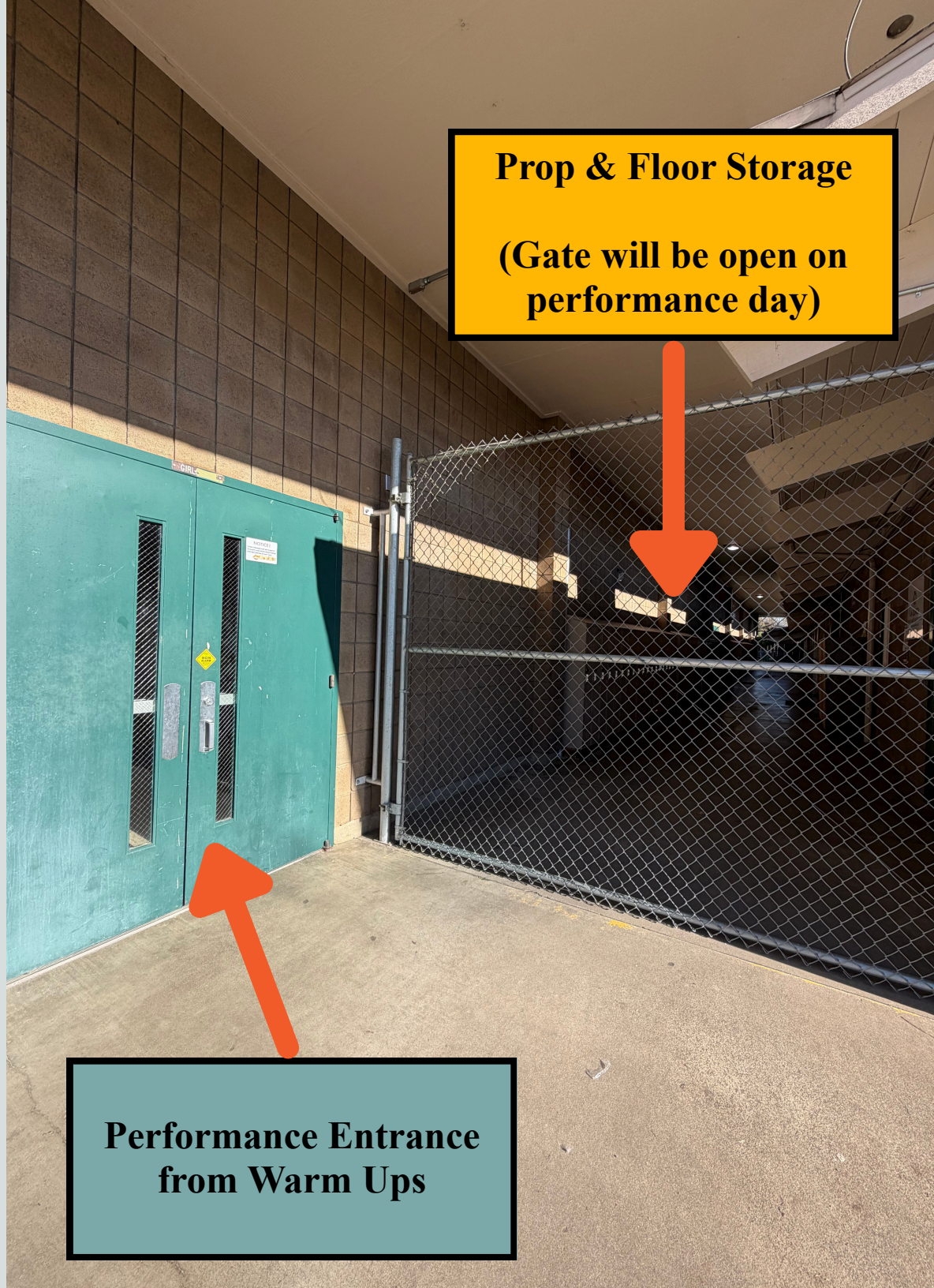
# SCENIC MIDDLE SCHOOL



**Prop & Floor Storage**

**(Gate will be open on  
performance day)**

**Performance Entrance  
from Warm Ups**





**Double Doors To Staging**  
Middle bar removed on  
performance day



**Staging Area**

**Enter**



**Exit**



**Audience**

**Spectator  
Entrance**