



# 2025 Glencoe Winter Showcase

**Glencoe High School**

2700 NW Glencoe Rd  
Hillsboro, OR 97124

**Band Director/Show Coordinator**

Benjamin Adams  
[adamsb@hsd.k12.or.us](mailto:adamsb@hsd.k12.or.us)

**Assistant Show Coordinator:**

Julie Eells  
[tjtjeells@yahoo.com](mailto:tjtjeells@yahoo.com)

**Colorguard Director:**

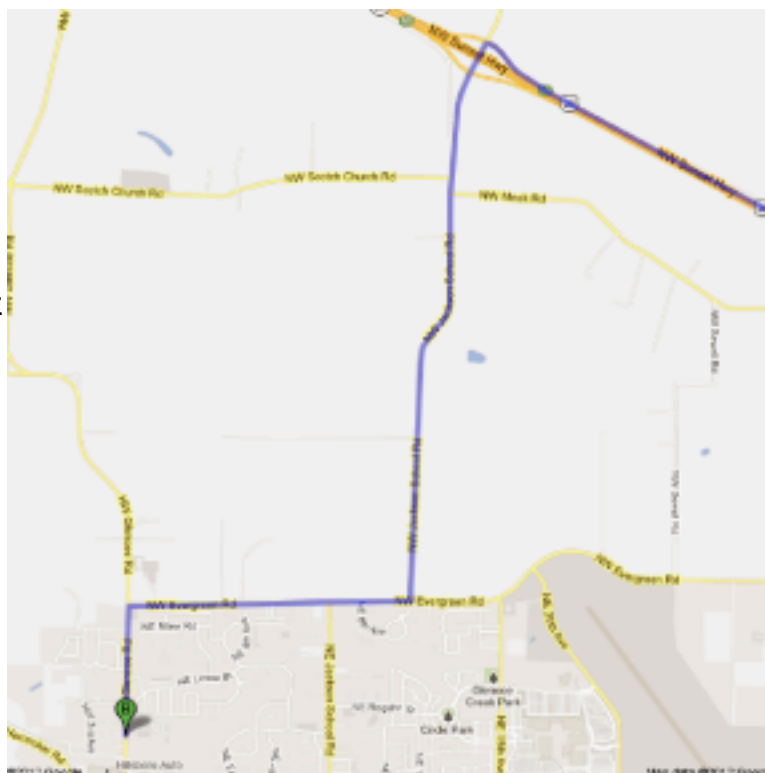
Amy DeGiovanni  
[facelessdancer@gmail.com](mailto:facelessdancer@gmail.com)

**Booster President:**

Amaryllis Daniels  
[ghsbandboosterpresident@gmail.com](mailto:ghsbandboosterpresident@gmail.com)

**Website:**

<http://glencoebands.com>

**Directions to Glencoe High School from OR-26 W/Sunset Highway:**

- Take Exit 59 for Jackson School Rd.
- Turn left onto NW Jackson School Rd and continue 2.2 miles
- At traffic light, turn right onto NW Evergreen Rd and continue 1.1 miles
- At T intersection, turn left onto NW Glencoe Rd and continue 0.5 miles and GHS will be on the left

**Admission:**

Tickets are available at the Spectator Ticket Booth located near the Main Entrance. All spectators will receive a wristband for entry.

General Admission: \$15

Students with a valid school ID: \$10

Children 5 and under: FREE



# 2025 Glencoe Winter Showcase

## **Adjudicators:**

- Anthony Riederer- Portland, OR
- Carl Nelson- Corona, CA
- Kurt Jull- Portland, OR
- Lee Carlson- Palm Springs, CA
- Ryan Valencia- Portland, OR

## **Performance Schedule:**

Groups will be adjudicated according to their specified classification. All groups will compete in Prelims and Finals. Please refer to the schedule on [nwapa.net](http://nwapa.net) for the most up-to-date performance times.

## **Warm-Up:**

The official warm-up area will be designated as a combined body/equipment warm-up time. Each group will receive a specific warm-up area (A or B). Please refer to the performance schedule for further details.

## **Parking:**

Performing groups, buses, and trailers will park in the North Lot. A sign will be posted to help direct your groups to the correct location.

Spectators and adjudicators will park in the South Lot, which leads to the main entrance of the school. Overflow parking for spectators will be directed towards the North Lot. Parking is limited. Please be courteous and utilize only the necessary parking spaces for your buses, trailers, and vehicles. Refer to the flow map for more information.

## **Performer Check-In / Additional Volunteer Wristbands:**

Upon arrival, staff and performers will report to Performer Check-In. Performers will receive a wristband. However, performers will not be issued a wristband until a staff representative has acquired the Show Packet at check-in. Each group will receive 10 additional wristbands for staff and volunteers. A voucher will be included in the show packet to purchase up to 5 additional wristbands at the Spectator Ticket Booth for a discounted rate of \$7 per wristband. Checks, money orders, cash, or credit card are accepted. Checks are payable to Glencoe Band and Colorguard Boosters.



## 2025 Glencoe Winter Showcase

### **Prop and Floor Storage:**

There are two locations for prop and floor storage. Groups may choose to store their props/floors inside the school by accessing the performer check-in entrance. As a secondary option, you may store your props/floor outside near the performance entrance to the gym. Signs will be clearly marked at both locations. You will have double-door access to both storage areas. Refer to the flow maps for further details.

### **Floor Folding / Gym Flow: \*\*\*\*IMPORTANT CHANGE FROM PREVIOUS YEARS!\*\*\*\***

The show entrance calls for a Vertical timeline. You will enter the gym from the inside, Audience right front corner. Pull your floor across until you reach the vertical timeline. The timing and penalty adjudicator will tell you when to move across the timeline. At that point, you may continue to unfold your floor to the Audience left sideline. After you perform, pull your floor to the Audience left sideline. You will be directed to the Floor Folding Area, which is located near the Audience left back corner. (Students who are not entering the floor folding area may exit the gym through the Performer Exit at the Audience back left corner.) After you have folded your floor, you will be directed to exit the Floor Folding Area through the gym to the back Side 1 exit. A volunteer will be onsite to direct traffic between shows.

### **Awards:**

All teams will be receiving trophies.

### **Photography:**

"Open Your Eyes" Photography will be onsite to offer group photos.

### **Locker Rooms:**

Locker rooms will be available for groups who need to change into uniform. Please use the locker rooms and NOT the spectator restrooms.

### **Outside Practice Space:**

Groups are welcome to practice outside before your performance. Please stay off the parking lot areas. However, we do have access to the tennis courts and turf field and other additional areas.

### **Indoor Group Space:**

Each group will be designated an area inside the school to house your equipment and supplies. Groups are welcome to warm up in these areas.



## 2025 Glencoe Winter Showcase

### **Food Trucks:**

Food Trucks will be on site near the spectator entrance in the parking lot and inside the inner courtyard by the vendor area. NO food or drink is allowed in the gym.

### **Spectator Capacity:**

In the event our gymnasium reaches capacity, we will ask spectating performers to watch the show in our LiveStream area located in the New Cafe. (near Warm-Up)

### **LiveStream Access:**

For those who cannot attend, or, in the event we are over capacity, the show will be available through livestream. We will have a projector displaying the performance in the LiveStream Viewing Area. For access to the livestream, please share the links below:

Home Page access: <https://www.nfhsnetwork.com/schools/glencoe-high-school-hillsboro-or>

### **Show Music:**

Please upload your show music to contest dynamics. (This service is provided through NWAPA) As a back-up, please have a copy of your music on an electronic device in the event your music is not working properly.

### **Video Recording:**

Personal videotaping is permitted, however, please be courteous to the spectators seated around you. Spectators are not allowed on the gym floor at any time during performance.

### **Staff Hospitality:**

There will be a designated Staff Hospitality Area located upstairs in the Media Center.