



2024 | Kamiak Winter Invitational

March 2, 2024

Kamiak High School

10801 Harbour Pointe Blvd, Mukilteo, WA 98275

Welcome to the **2nd Annual Kamiak Winter Invitational!** We hope you have a great experience and outstanding performances throughout the day. Please reach out and let us know if there's anything we can do to help make the day more successful for you and your students.

Show Contacts

Sally Stanfill, Show Coordinator :: salichristina@gmail.com (360-241-8835)

Jason Stanfill, Show Coordinator :: jasonstanfill@gmail.com (425-420-3508)

Nick Benson, Percussion Director :: nbwalrus@gmail.com (425-359-3350)

Megan Sellman, Guard Director :: sellman.megan@gmail.com (206-913-9414)

Parking Information

Equipment Parking – Please see the attached parking map so we can effectively control the flow of traffic. Percussion equipment trucks and support vehicles should enter through East Entrance located on Harbour Pointe Blvd (next to the Church of Latter-Day Saints) and continue down the lane to the back parking lot by the sports fields. A parking attendant will direct you to your parking area. Signs will help direct you as well. Guard Parking/Overflow Unit vehicles and support vehicles can park in the Southeast Lot by the church.

Bus Parking – Buses should park at the group site or in the designated Bus Parking areas in the Southeast lot by the sports fields (percussion lot).

Spectator Parking – Spectator Parking will be located on the West side of the school, next to the gyms/pool. If the lot fills up, overflow parking is available next door at Harbour Pointe Middle School.

Unit Check-In

Groups will check in at the South entrance doors of the KHS athletics building. Signs will be posted on the exterior doors to assist you. Only the Director should appear at check-in to reduce crowds near the entrance. A Kamiak volunteer will provide you with the appropriate number of wrist bands for the performers.

Staff Passes

All groups will receive 7 additional wrist bands for staff and volunteers at check-in. In order to enter the building, all parent volunteers and staff members will require a wrist band. At check-in, each unit will have the option to purchase up to 10 additional wrist bands at a discounted rate of \$10 each. Any person not wearing a wristband will be directed to the Ticket Sales table to purchase one.



2024 | Kamiah Winter Invitational

Ticketing

Tickets will be on sale at the table located just inside the Spectator Entrance.

Tickets are \$15 for general admission (children 6 & under are free).

All prices are for the entire day (prelims & finals). Scan the QR code to purchase tickets.

Tickets are also available for advanced sale at this link:

<https://kamiakarts.seatyourself.biz>



Changing Areas/Equipment Storage

Restrooms located in the main gym athletics building should not be used for changing. Restrooms near guard warm-ups in the East Campus building and in the Commons area can be used for changing.

The Upstairs Commons area will have dedicated space for each group that will act as an indoor location for performers to socialize, relax/stay dry and/or store equipment.

Floor Folding/Prop Storage

Floor Folding will take place in the Aux Gym. Each unit will fold their floor in the Aux Gym after their performance. All groups are welcome to unload their floors and props in the Bus Lane outside of the Main Gym upon arrival at the show site and store their props/floors in the Aux Gym in the designated area. Both sets of doors leading into and out of this room are from the outside and are standard double doors.

Outdoor prop storage (for oversized props), if needed, will be located outside in the breezeway between the gyms and the portables. Additional indoor prop storage is in the Aux Gym by the double doors.

General Show Flow

Please see the show flow map and facility maps for more details. We will be using a horizontal timing line, with minor differences between the guard and percussion logistics. See Warm-up Area notes below.

Guards will enter the gym through the interior hallway of the building (*Front Side 1*) and will exit OUTSIDE (*Back Side 2*). **Please prepare to have footwear ready for the performers before exiting the building.** However, all props will need to enter from the exterior of the building (*Front Side 2*). Props will exit with the rest of the ensemble (*Back Side 2*).

Percussion will enter through the exterior doors (*Front Side 2*) and exit outside (*Back Side 2*). See images below.



2024 | Kamiah Winter Invitational

Warm-up Areas

Please see the show flow map for more details.

There will be two Guard Warm-up Areas and an additional body warm-up area. Warm-up A is located in the MPR in the East Campus building. There are restrooms in this building. No group is allowed to warm-up in the hallways or to go upstairs.

Warm-up B is located in the Commons area in the main building. An additional body warm-up area will be in the Wrestling Room across the hallway from the Aux Gym.

There is a (mostly) covered walkway/bridge that connects East Campus to the Commons/Wrestling Room. Signs will be posted to assist you.

Percussion warm-up should happen outside in the Unit Parking Area at your camp site. Please keep all vehicle lanes clear. **In the event of inclement weather, we will offer indoor warm-up space in the PAC Building (Band & Orchestra Rooms).* Percussion Body warm-ups are available in the Wrestling Mat Room on a first come, first served basis.

Recording/Photography

The NWAPA will not be providing groups with performance videos. Units will be allowed to videotape their own performance for educational use. However, there will not be a dedicated location for recording, as the gym space does not allow for this.

Color Guard Soundtracks

Please upload your show soundtrack to the NWAPA Contest Dynamics service through the link you were provided. As a back-up we recommend having a copy of your soundtrack on your device in the event your music is not working properly. If desired, feel free to swing by the sound table in the Main Gym when you arrive to check-in to ensure it is working properly.

Concessions

A large variety of concessions items will be for sale at the booth located outside of the main gym. Hot dogs, pizza, nachos, sub sandwiches, salads, warm and cold drinks, candy, and chips, etc.

Merch Sales

Hoodies and T-Shirts will be available for purchase in the foyer outside the main gym (next to concessions) at the merch table. Ear Plugs will also be for sale.



2024 | Kamiah Winter Invitational

Tobacco/Alcohol Policy

Tobacco and alcohol are prohibited on all parts of the Kamiah High School and Harbour Pointe Middle School campuses.

Percussion & Guard Contest

Each ensemble will perform their program in front of an audience and judges, according to NWAPA rules and policy. For more information see <https://nwapa.net/resources/#winter>

Teams will perform in prelims according to the published schedule. Teams will perform in finals in reverse order of finish (by class) from prelims contest.

Awards will be awarded after finals round only. Judge audio commentary and scores will be available electronically via Contest Dynamics. Directors will receive a link via email prior to the event.

Critique

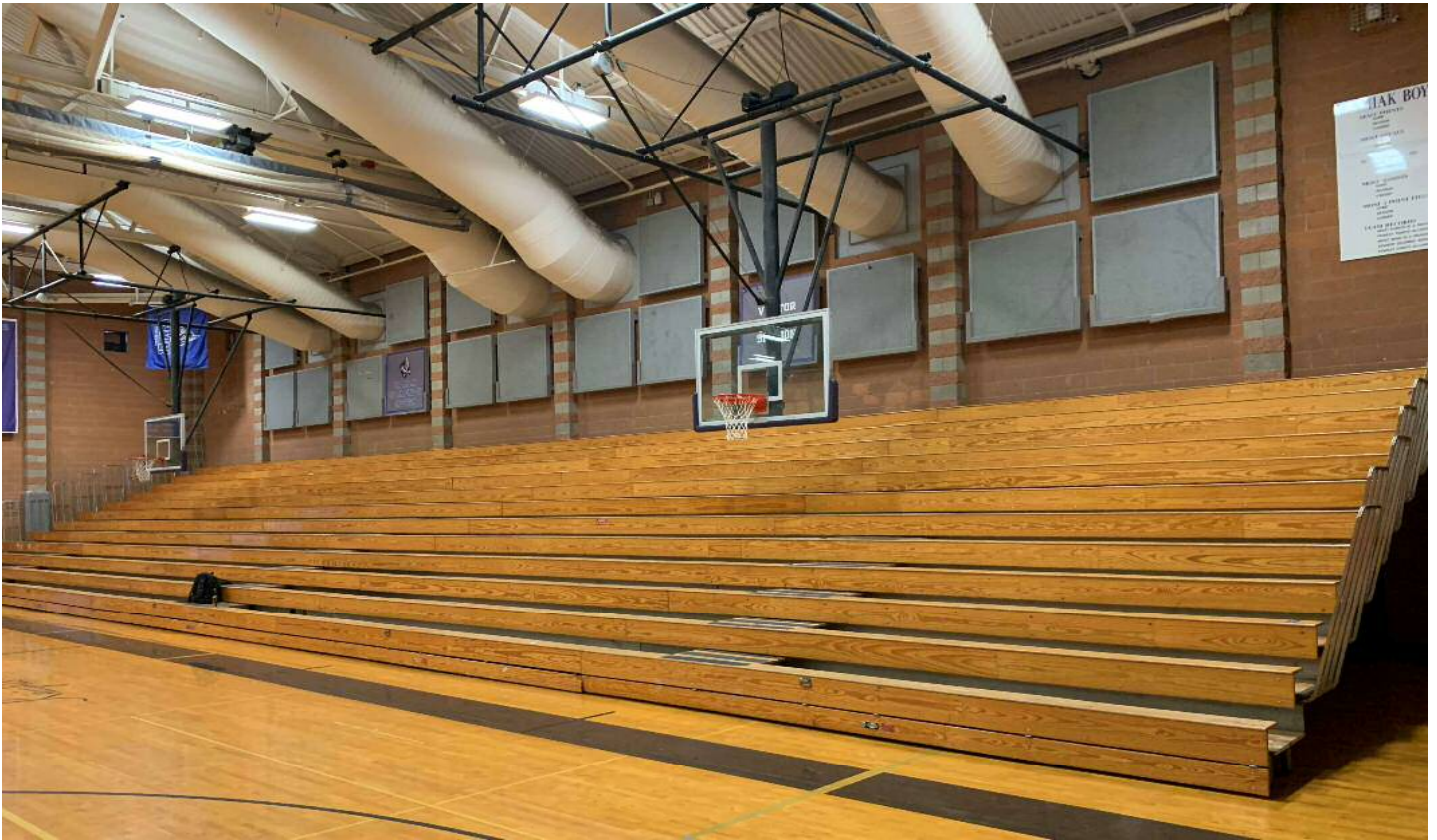
There will be an instructor only critique with judges in a classroom near the Judge's Room (marked "Critique") after each performance round. Each team will have 6 minutes with judges to discuss their program. Recaps will not be made available until after critique. Critique times are first come, first served. Instructors are encouraged to listen to their commentary recordings prior to critique.



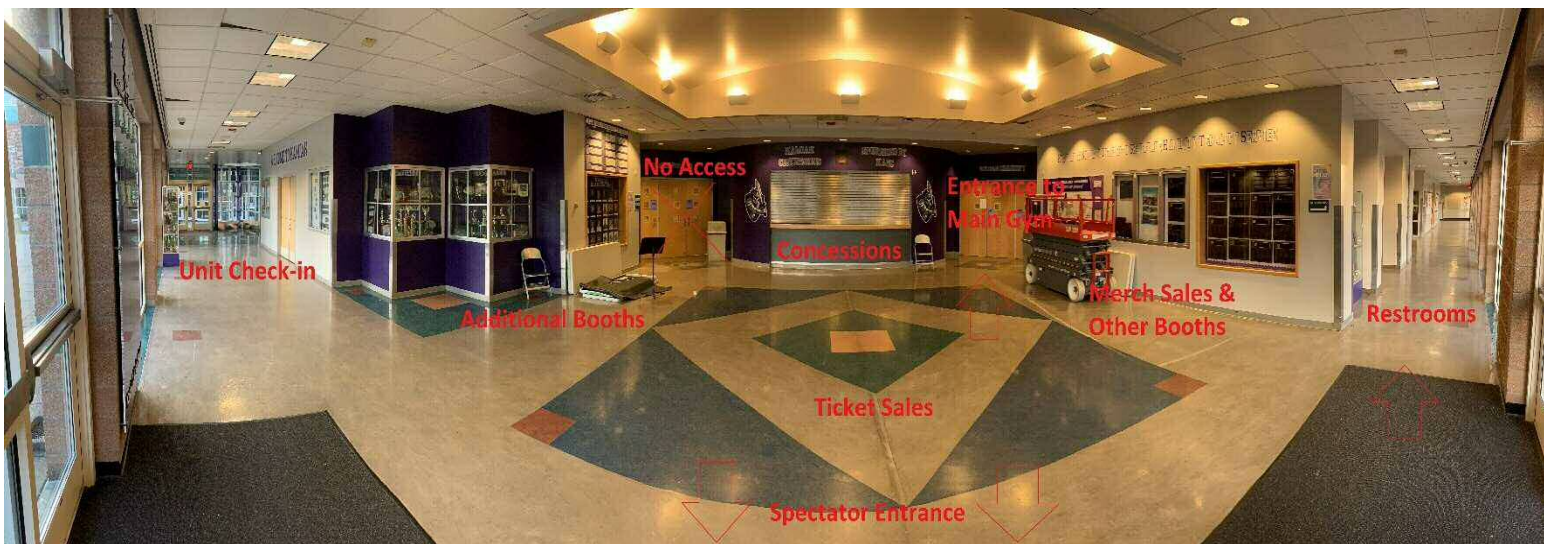
2024 | Kamiak Winter Invitational

Facilities & Show Flow

Main Gym – Spectator/Judge bleachers (hoops will be up)



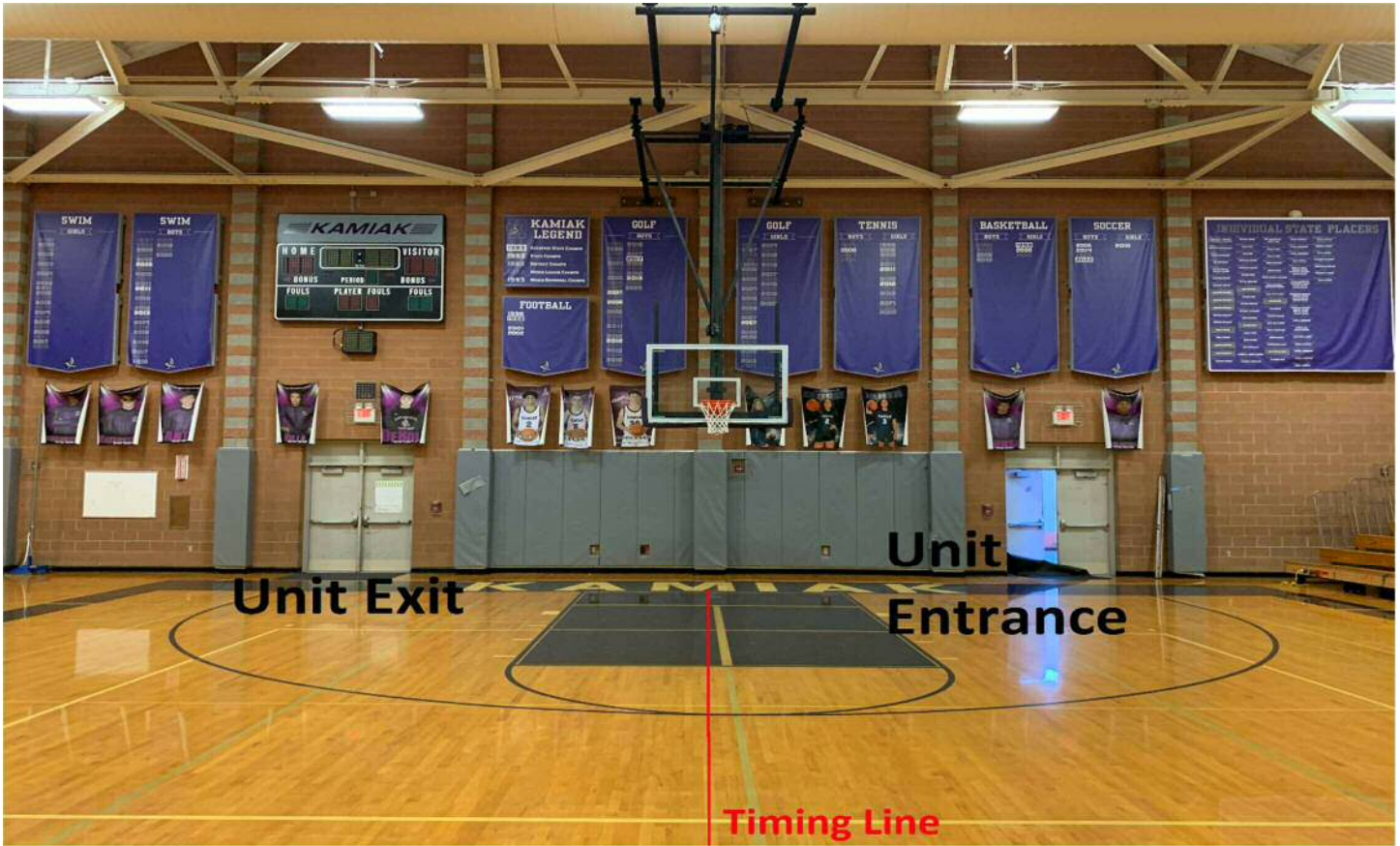
Spectator Entrance - Foyer outside Main Gym (merch table, concessions, ticket sales)



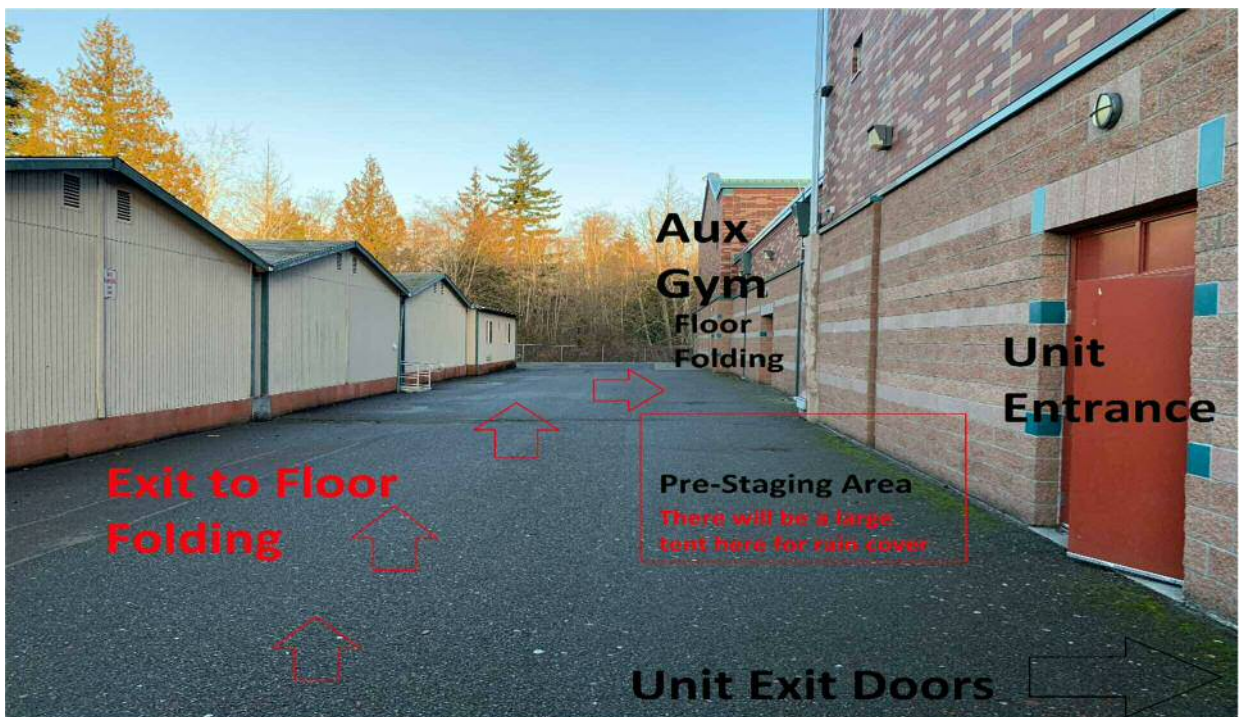


2024 | Kamiak Winter Invitational

Percussion Entrance/Exit (Side 2, Horizontal Timing Line)



Breezeway
:: Pre-Stage
Outside,
Floor folding
route



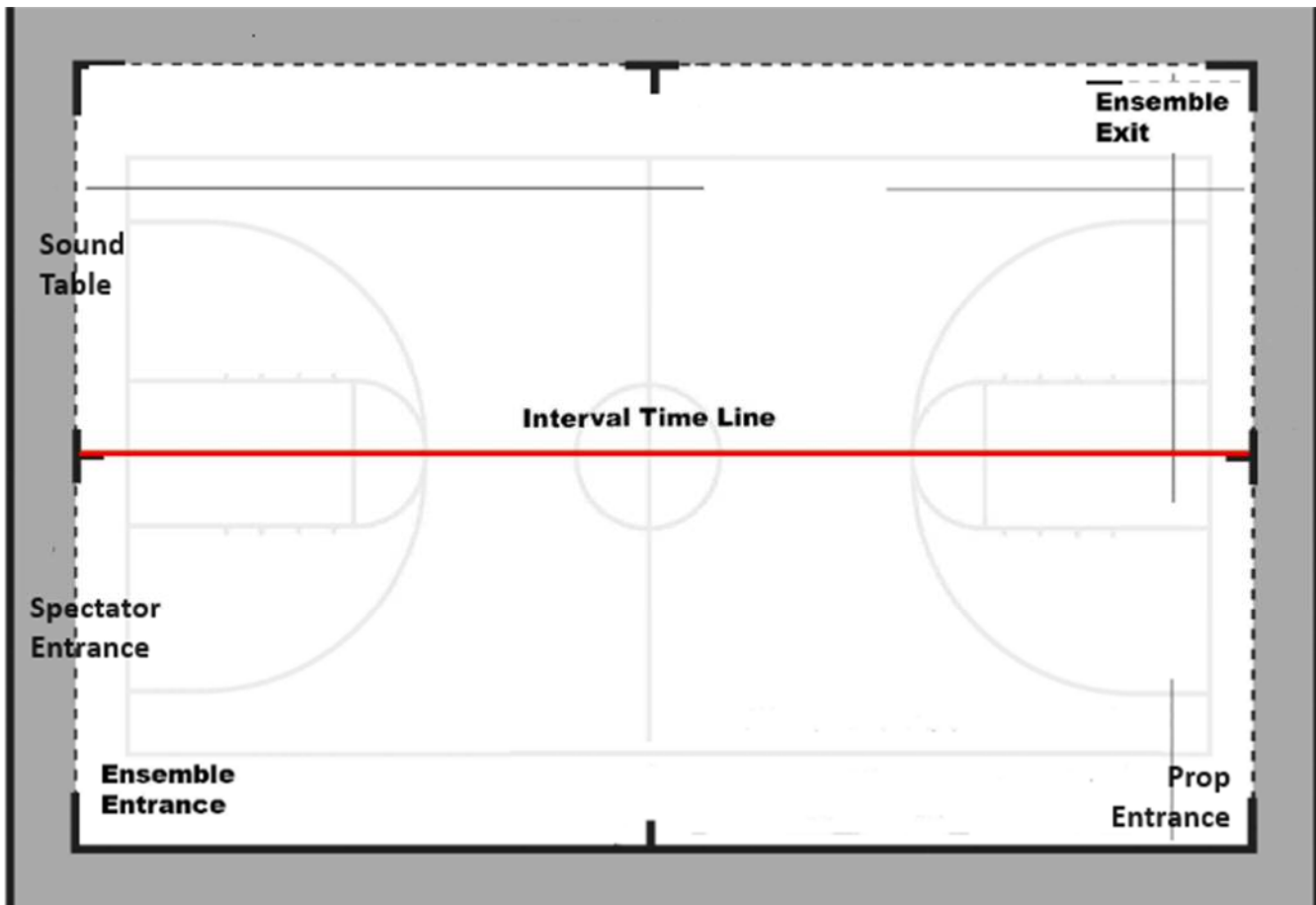


2024 | Kamiah Winter Invitational

Main Gym View (sound table to left, hoops will be up, back bleachers closed)



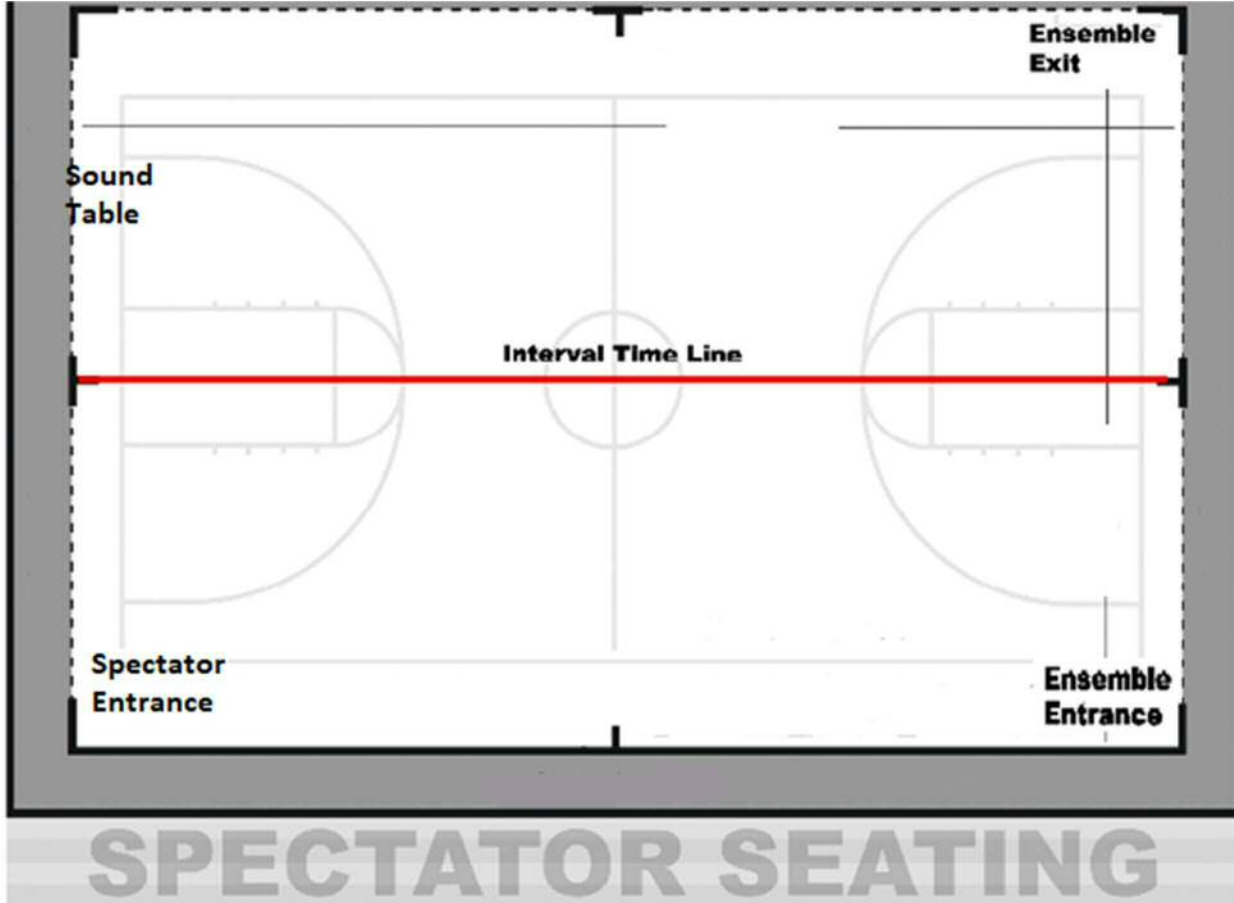
Guard Entrance/Exit Logistics





2024 | Kamiak Winter Invitational

Percussion Entrance/Exit Logistics





2024 | Kamiak Winter Invitational

East Campus (MPR) Color Guard Warm-up Area A



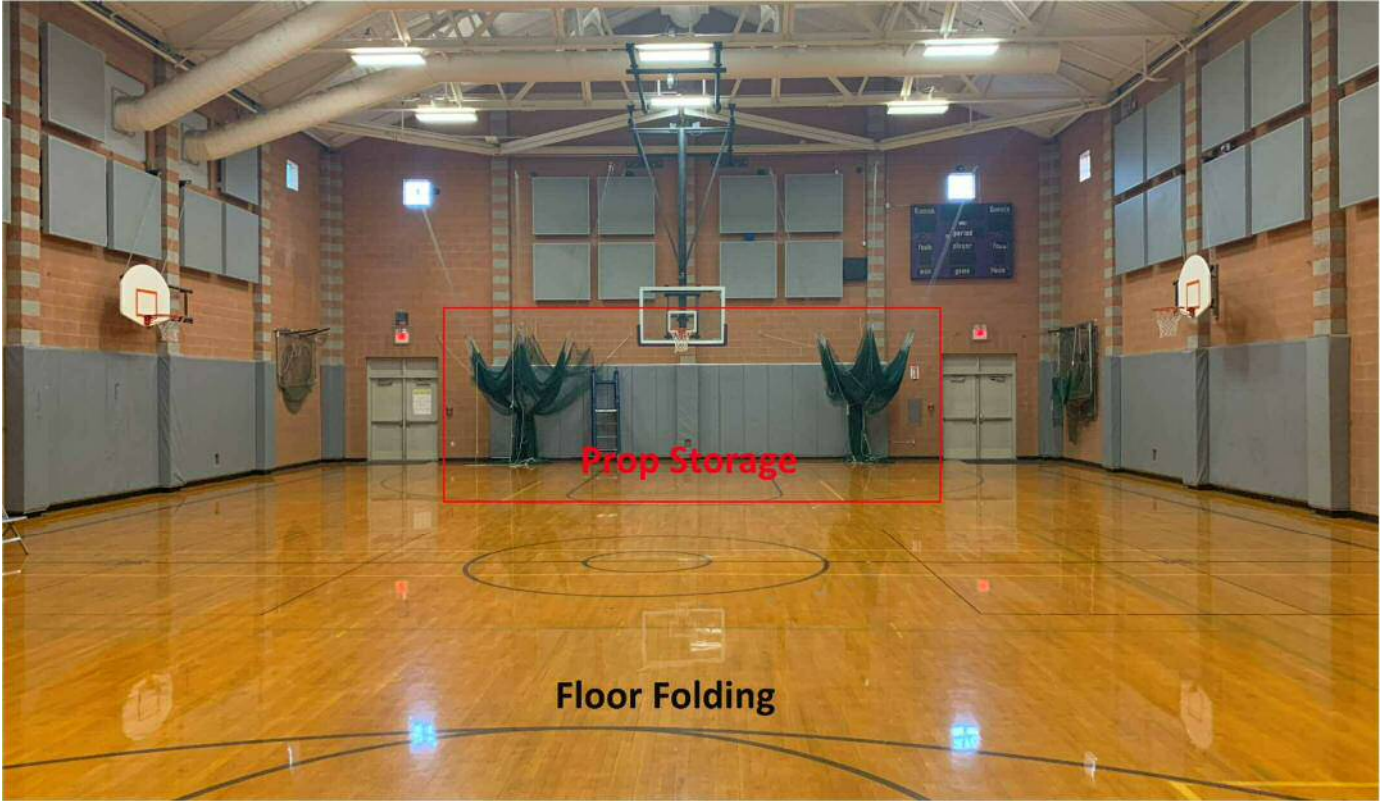
Auxiliary Gym (Floor Folding & Floor/Prop Storage as needed)





2024 | Kamiak Winter Invitational

Aux Gym Double Doors (Prop Storage between doors)



Wrestling Mat Room (Optional Body Warm-up area – no tossing)

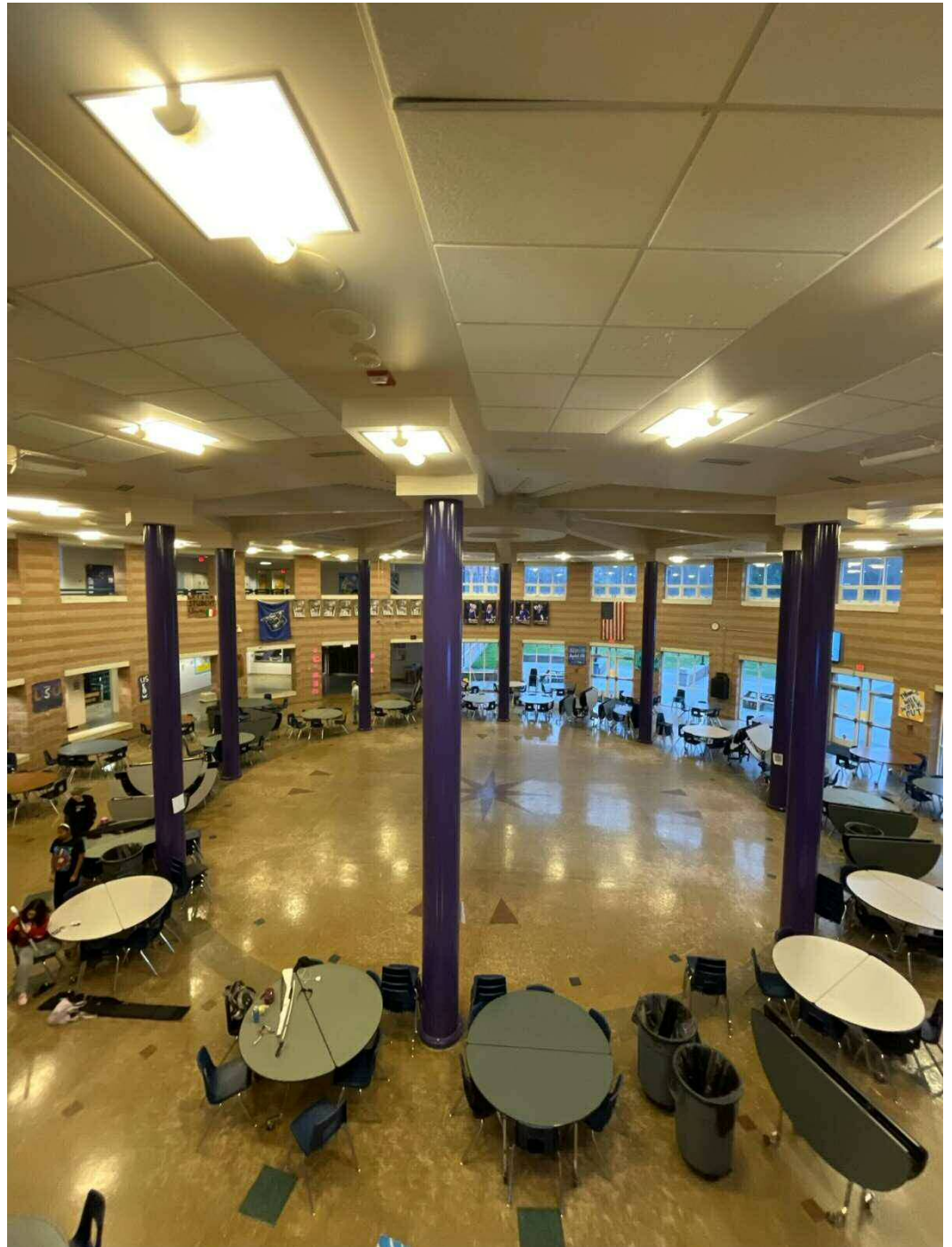




2024 | Kamiak Winter Invitational

Commons Area
(Warm-up B)

**Tables will be set-up
upstairs*





2024 | Kamiak Winter Invitational





2024 | Kamiak Winter Invitational

